

1975
1976

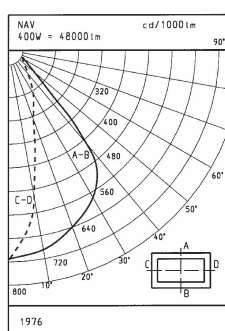
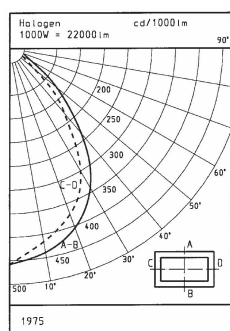
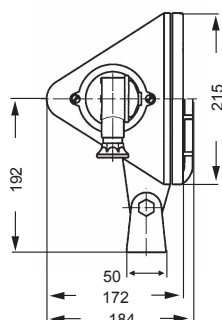
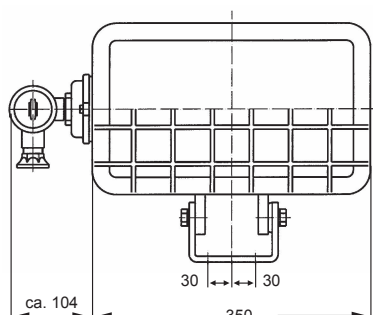
Argo Navis

Red Cast Brass Floodlight

karl-dose.de/Argo Navis



Argo Navis
1975



Technical Data

Name & No.	Watt	kg	Description
Argo Navis 1975/500	500W	13,50	<ul style="list-style-type: none"> • IP 56 • casing with fins and cover made of red cast RG5, glass-holding frame and branching box made of brass, bracket made of malleable cast iron, hard glass pane, resistant against temperature changes • lampholder support to be withdrawn sideways • lampholder: R7s • 230V
Argo Navis 1975	1.000W	13,50	<ul style="list-style-type: none"> • IP 56 • casing with fins and cover made of red cast RG5, glass-holding frame and branching box made of brass, bracket made of malleable cast iron, hard glass pane, resistant against temperature changes • lampholder support to be withdrawn sideways • lampholder: R7s • 230V
Argo Navis 1976	1.000W	13,50	<ul style="list-style-type: none"> • IP 56 • casing with fins and cover made of red cast RG5, glass-holding frame and branching box made of brass, bracket made of malleable cast iron, hard glass pane, resistant against temperature changes • lampholder support to be withdrawn sideways • lampholder: E40 • 230V

Spare Parts

No.	kg	Description
9200234	0,06	halogenlamp 1.000W 230V R7s length 189,1mm
2200480	0,06	halogenlamp 1.000W 230V E40
371	0,87	hard glass pane 321x186x6mm
371/D	0,19	u-profile silicone gasket
2200135		lampholder complete for 1975/500
2200136		lampholder complete for 1975
2200137		lampholder complete for 1976

Glass-holding frame available with guard , supplement charge.

1977
1978

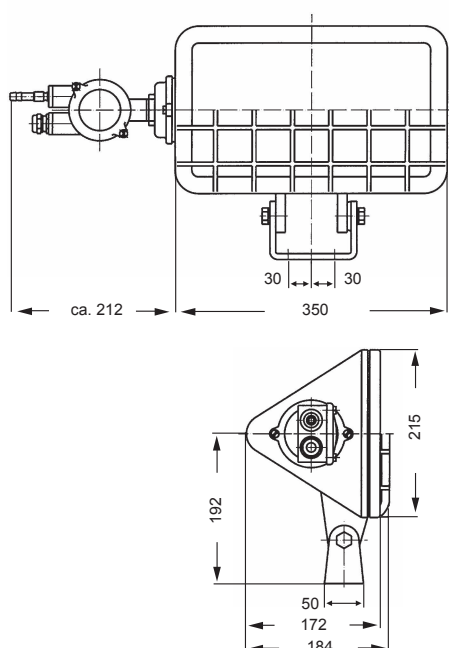
Argo Navis

Docklights

karl-dose.de/**Argo Navis**



Argo Navis
1977



Technical Data

Name & No.	Watt	kg	Description
Argo Navis 1977	500W	15,00	<ul style="list-style-type: none"> • IP 68 • casing with fins and cover made of red cast RG5, • glass-holding frame with guard made of brass • without branching box • lampholder: R7s • 230V • heat insulated cable required
Argo Navis 1978	1.000W	16,50	<ul style="list-style-type: none"> • IP 68 • casing with fins and cover made of red cast RG5, • glass-holding frame with guard made of brass • with branching box, with venting connection • and pressure tight cable gland • lampholder: E40 • 230V

Spare Parts

No.	kg	Description
371	0,87	hard glass pane 321x186x6mm
371/D	0,19	u-profile silicone gasket
457	0,25	E40 nipple-lampholder R 3/8"
2200139		lampholder complete for 1977
2200140		lampholder complete for 1978

also available without guard

