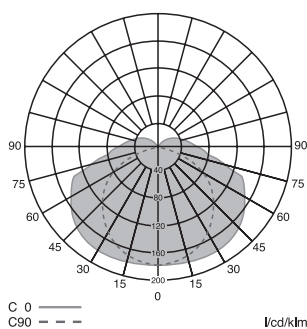
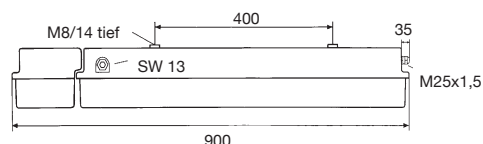
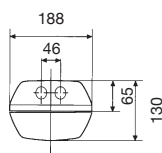


Ex Emergency Light Fittings 2x18W

Rotterdam
EMC218

Technical Data

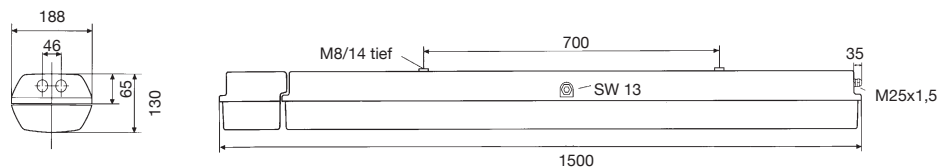
Name & No.	Wattage	kg	Description
Rotterdam EMC218	2 x 18W	10,00	<ul style="list-style-type: none"> IP 66 housing made of fibre glass reinforced polyester, protective cover made of polycarbonate, plastic cable gland plastic cable gland: M25x1.5 without lamp 50 / 60 Hz ex-protected fluorescent light fitting with 2 channel electronic ballast unit for bi-pin fluorescent lamps (G13) 2x18W. Double-sided lock with 10 latch points. Protective cover hingeable on both sides. Automatic switch built as a safety disconnecter acc. to EN 60947. Automatic switch ensuring the disconnection of all exposed components when the fitting is opened. Large terminal compartment with 6 terminals up to 6 mm². Rated voltage: AC 220V-254V +/- 10%, 47-63Hz. rated current: 0,23A; Cos phi: 0,95 (230V) permissible ambient temperature -5°C to +50°C. Light fitting with 7 Ah-NC battery, for 1,5 or 3 h emergency operation; local setting. Battery charging method with intelligent microelectronics. The required function and duration test is automatically performed with emergency operations or requested after 6 months. A necessary battery replacement will be indicated by the LED indicator. Insulation class I, single ended through-wiring. Certificate: BVS 09 ATEX E 147, 162, Type of protection: Ex eds IIC T4 for zone 1, zone 2.

Spare Parts

No.	kg	Description
EXL/WA18	1,28	Polycarbonate cover
EXL/SS13	0,10	Hexagon key
EXL/KB	0,35	Terminal strip
EXL/RKS	0,15	Reflector flaps with lampholder G13
EXL/EVG18	1,80	Electronic ballast unit
EXL/DB	0,25	Mounting bracket
EXL/RS14	0,31	Mounting device
EMC/BSN	1,91	Battery set with LED and monitoring

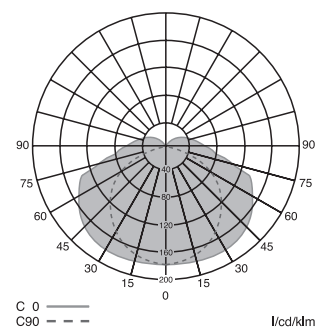


Rotterdam
EMC236



Technical Data

Name & No.	Wattage	kg	Description
Rotterdam EMC236	2 x 36W	12,00	<ul style="list-style-type: none"> • IP 66 • housing made of fibre glass reinforced polyester, protective cover made of polycarbonate, plastic cable gland • plastic cable gland: M25x1.5 • without lamp • 50 / 60 Hz • ex-protected fluorescent light fitting with 2 channel electronic ballast unit for bi-pin fluorescent lamps (G13) 2x36W. Double-sided lock with 20 latch points. Protective cover hingeable on both sides. Automatic switch built as a safety disconnecter acc. to EN 60947. Automatic switch ensuring the disconnection of all exposed components when the fitting is opened. Large terminal compartment with 6 terminals up to 6 mm². Rated voltage: AC 110V-254V +/- 10%, 47-63Hz. • rated current: 0,4A; Cos phi: 0,95 (230V) • permissible ambient temperature -5°C to +50°C. Light fitting with 7 Ah-NC battery, for 1,5 or 3 h emergency operation; local setting. Battery charging method with -intelligent- microelectronics. The required function and duration test is automatically performed with emergency operations or requested after 6 month. A necessary battery replacement will be indicated by the LED indicator. <p>Insulation class I, single ended through-wiring. Certificate: BVS 09 ATEX E 147, 162, Type of protection: Ex eds IIC T4 for zone 1, zone 2.</p>



Spare Parts

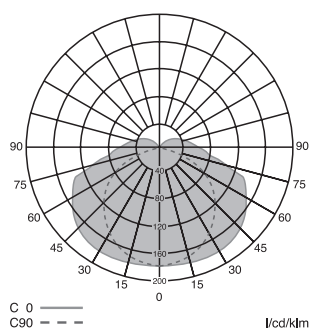
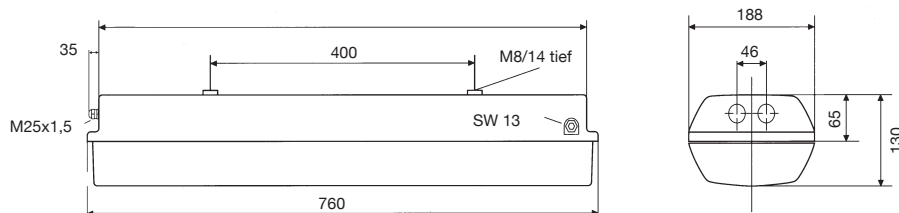
No.	kg	Description
EXL/WA18	1,28	Polycarbonate cover
EXL/SS13	0,10	Hexagon key
EXL/KB	0,35	Terminal strip
EXL/RKS	0,15	Reflector flaps with lampholder G13
EXL/EVG18	1,80	Electronic ballast unit
EXL/DB	0,25	Mounting bracket
EXL/RS14	0,31	Mounting device
EMC/BSN	1,91	Battery set with LED and monitoring

EXL218

Rotterdam

karl-dose.de/**Rotterdam**

Ex Fluorescent Light Fittings 2x18W

Rotterdam
EXL218

Technical Data

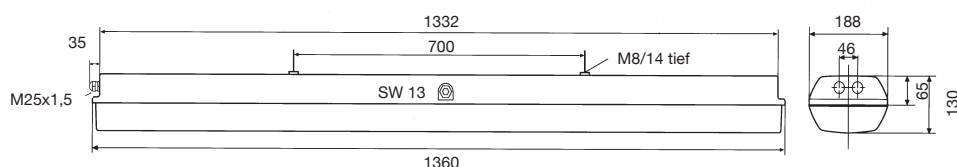
Name & No.	Wattage	kg	Description
Rotterdam EXL218	2 x 18W	4,60	<ul style="list-style-type: none"> • IP 66 • housing made of glass mat reinforced polyester, protective cover made of polycarbonate, plastic cable gland • cable gland: M25x1.5 • incl. lamp • 50 / 60 Hz • ex-protected fluorescent light fitting with 2 channel electronic ballast unit for bi-pin fluorescent lamps (G13) 2x18W. Double-sided lock with 10 latch points. Protective cover hingeable on both sides. Automatic switch built as a safety disconnecter acc. to EN 60947. Automatic switch ensuring the disconnection of all exposed components when the fitting is opened. Large terminal compartment with 6 terminals up to 6 mm². • rated voltage: AC 110V-254V +/- 10%, 47-63Hz, DC 110V-230V +/- 10%. Rated current: 0,18A; Cos phi: 0,95 (230V) • permissible ambient temperature -25°C to +50°C. Insulation class I, single ended through-wiring. Certificate: BVS 09 ATEX E 147, 162 Type of protection: Ex eds IIC T4 for zone 1, zone 2.

Spare Parts

No.	kg	Description
EXL/WA18	1,28	Polycarbonate cover
EXL/SS13	0,10	Hexagon key
EXL/KB	0,35	Terminal strip
EXL/RKS	0,15	Reflector flaps with lampholder G13
EXL/EVG18	1,80	Electronic ballast unit
EXL/DB	0,25	Mounting bracket
EXL/RS14	0,31	Mounting device

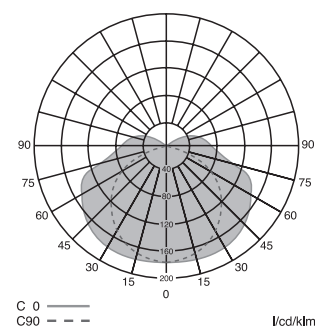


Rotterdam
EXL236



Technical Data

Name & No.	Wattage	kg	Description
Rotterdam EXL236	2 x 36W	6,70	<ul style="list-style-type: none"> • IP 66 • housing made of fibre glass reinforced polyester, protective cover made of polycarbonate, plastic cable gland • plastic cable gland: M25x1,5 • without lamp • 50 / 60 Hz • ex-protected fluorescent light fitting with 2 channel electronic ballast unit for bi-pin fluorescent lamps (G13) 2x36W. Double-sided lock with 20 latch points. Protective cover hingeable on both sides. Automatic switch built as a safety disconnecter acc. to EN 60947. Automatic switch ensuring the disconnection of all exposed components when the fitting is opened. Large terminal compartment with 6 terminals up to 6 mm². • rated voltage: AC 110V-254V +/- 10%, 47-63Hz, DC 110V-230V +/- 10%. Rated current: 0,34A; Cos phi: 0,95 (230V) • permissible ambient temperature -25°C to +50°C. Insulation class I, single ended through-wiring. Certificate: BVS 09 ATEX E 147, 162 <p>Type of protection: Ex eds IIC T4 for zone 1, zone 2.</p>



Spare Parts

No.	kg	Description
EXL/WA36	1,28	Polycarbonate cover
EXL/SS13	0,10	Hexagon key
EXL/KB	0,35	Terminal strip
EXL/RKS	0,15	Reflector flaps with lampholder G13
EXL/EVG36	1,80	Electronic ballast unit
EXL/DB	0,25	Mounting bracket
EXL/RS14	0,31	Mounting device